

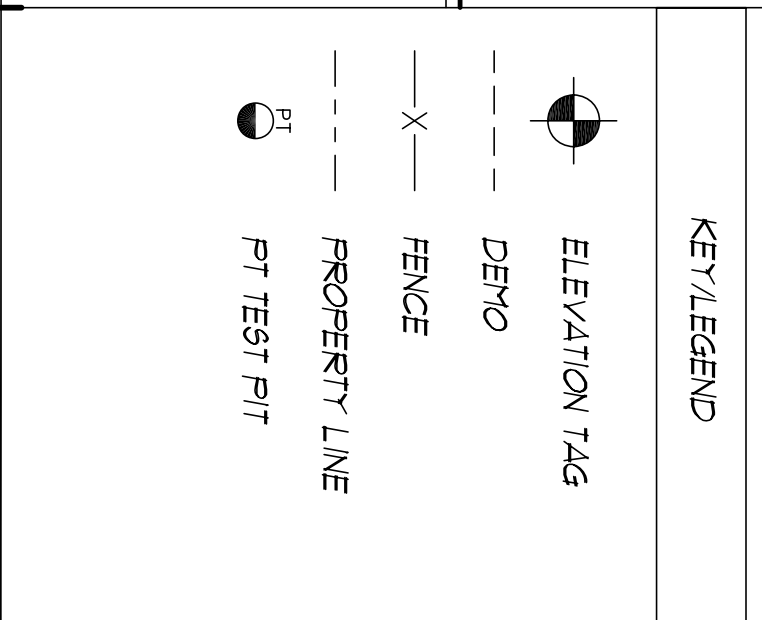
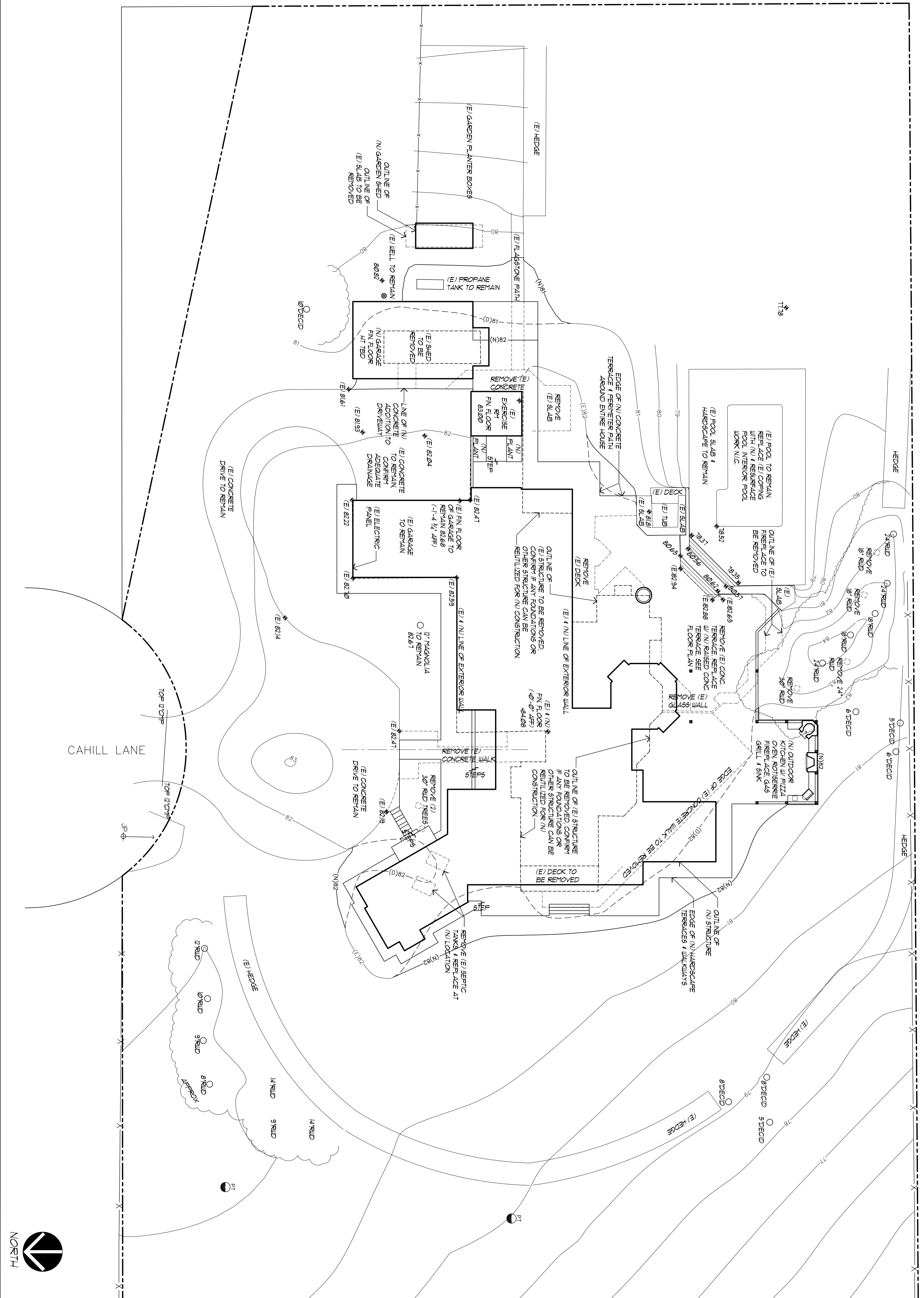


**GENERAL NOTES**

- REFER TO FLOOR PLAN FOR DESIGN OF (N) HARDSCAPE FEATURES.
- CONFIRM LOCATION OF (N) SEPTIC SYSTEM.

SHEET NOTES

11



**SITE PLAN & DEMOLITION PLAN**

SCALE : 1/16" = 1'-0"

Drawn By	WD
Checked By	WD
Project No.	09013
Date	03.01.10
Issue	PRELIM PRICING SET

**NOT FOR CONSTRUCTION**

**HANSEL RESIDENCE**

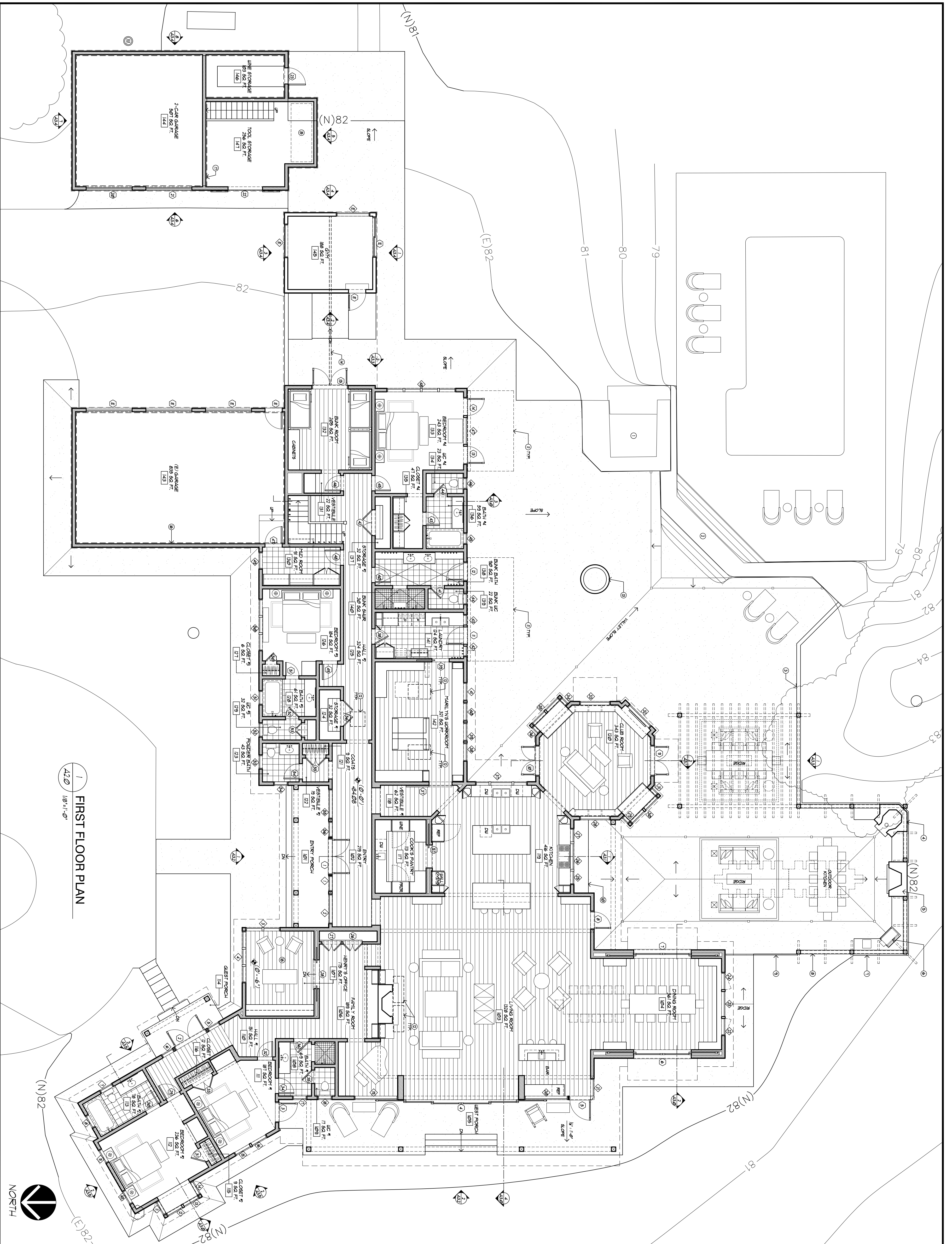
473 Cahill Lane, Santa Rosa, California 95401

**WADE DESIGN ARCHITECTS**

155 Frustuck Ave. Fairfax, CA 94930  
 Phone: 415.785.4213 Fax: 415.785.4214  
 info@wade-design.com

These documents are the property of Wade Design.  
 Any unauthorized use without written consent is prohibited by law.  
 Wade Design disclaims responsibility for the documents if used in whole or in part at any other location.

**A1.0**



1 FIRST FLOOR PLAN  
1/8" = 1'-0"

GENERAL NOTES

- 1 REFER TO SITE PLAN FOR NOTES REGARDING (E) CONDITIONS.
- 2 SLOPE FLATWORK 1/2" : 1'-0" UON.

SHEET NOTES

- 1 (E) TUB & SURROUNDING LANDSCAPE TO REMAIN.
- 2 (E) STEPS TO POOL TO REMAIN.
- 3 (N) LANDSCAPE LOW WALL.
- 4 (N) PIZZA OVEN WITH PLASTER SURROUND.
- 5 (N) ROTISSERIE FIREPLACE WITH RAISED HEARTH & PLASTER SURROUND.
- 6 (N) BARBECUE UNIT.
- 7 CAST CONCRETE SINK INTEGRAL WITH COUNTER.
- 8 LOW WALL WITH SHADE TRELLIS ABOVE.
- 9 SLIDING GLASS WIND SCREEN.
- 10 OUTDOOR COUNTER & CABINERY.
- 11 MOTORIZED RETRACTABLE AWNING.
- 12 SKYLIGHT ABOVE.
- 13 5'-0" O.D. LP GAS FIREPIT WITH 8" HEIGHT MASONRY WALL & DECORATIVE BURNER ELEMENT.
- 14 (E) GULF AN RIDGE WITH ROOF & CEILING TO REMAIN AS (N) BREASTFEED.
- 15 (E) POOL EQUIPMENT TO REMAIN.
- 16 PROVIDE STORAGE LOFT ABOVE (E) GARAGE JOISTS. ACCESS FROM INTERIOR STAIR.
- 17 OUTLINE OF STORAGE LOFT AT (N) GARAGE.
- 18 DEPRESSURED SLAB AT HENRY'S OFFICE. PROVIDE CURB AT EXTERIOR WALL.

KEY/LEGEND

- ◇ WINDOW TAG
- ◻ DOOR TAG
- (N) CONCRETE
- AREA DRAIN

FIRST FLOOR PLAN

SCALE : 1/8" = 1'-0"

A2.0

NOT FOR CONSTRUCTION

HANSEL RESIDENCE

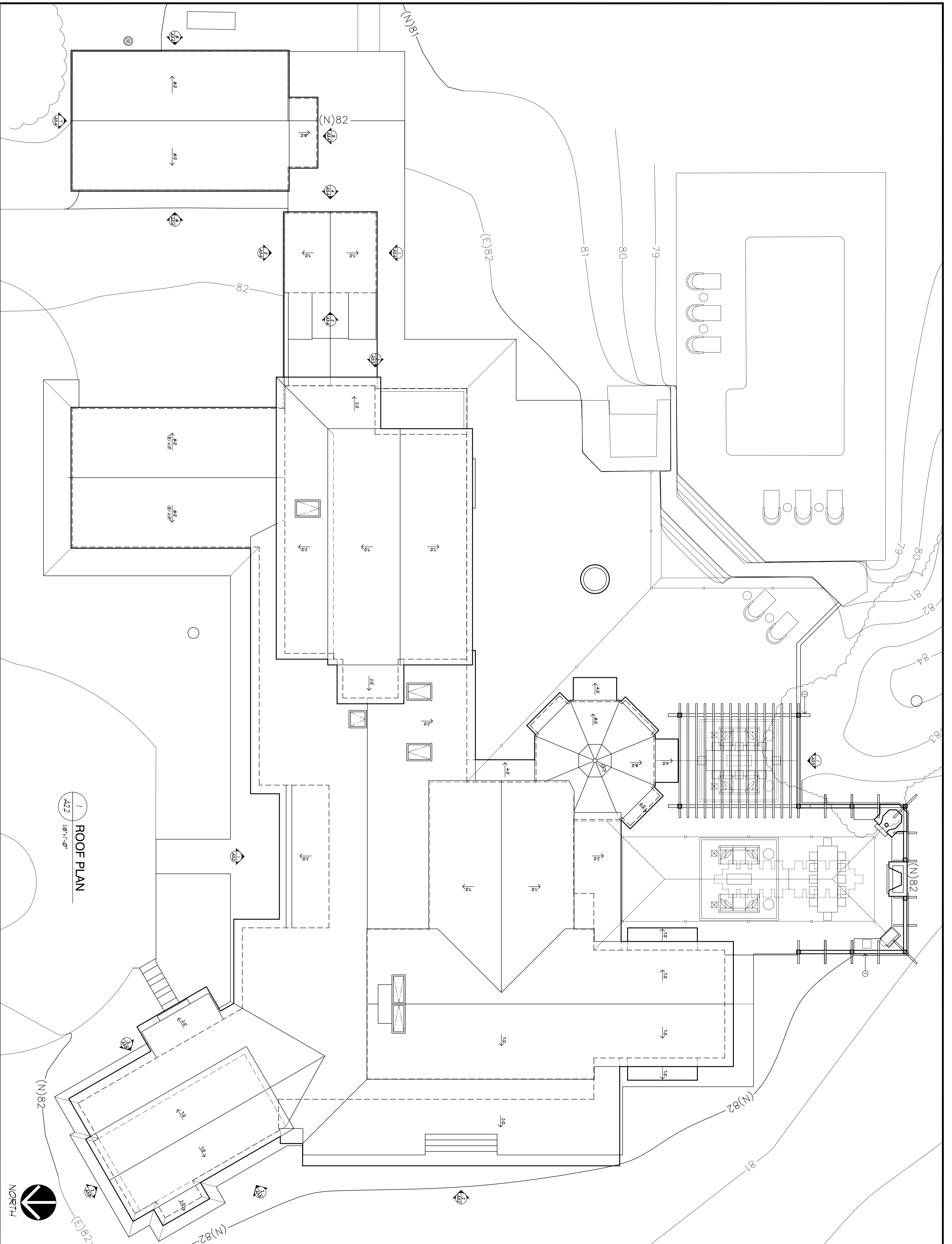
473 Cahill Lane, Santa Rosa, California 95401

WADE DESIGN ARCHITECTS

155 Frustuck Ave. Fairfax, CA 94930  
Phone: 415.785.4213 Fax: 415.785.4214  
info@wade-design.com

These documents are the property of Wade Design.  
Any unauthorized use without written consent is prohibited by law.  
Wade Design disclaims responsibility for the documents if used in whole or in part at any other location.





1 ROOF PLAN  
A2.2  
1/8"=1'-0"

GENERAL NOTES

1. MEET OR EXCEED UNDERLAYMENT REQUIREMENTS PER ROOFING MANUFACTURER AT ALL ROOF SLOPES.
2. REFER TO ELEVATIONS FOR GUTTERS.
3. DOWNSPOUT LOCATIONS TBD

SHEET NOTES

- ① SHADE TRELLIS ABOVE OUTDOOR KITCHEN COUNTERS.
- ② FOUR-POST PERGOLA

KEY/LEGEND

ROOF PLAN

SCALE : 1/8"=1'-0"

Drawn By: WD  
 Checked By: WD  
 Project No.: 09013  
 Date: 03.01.10  
 Issue: PRELIM PRICING SET

**NOT FOR CONSTRUCTION**

**HANSEL RESIDENCE**

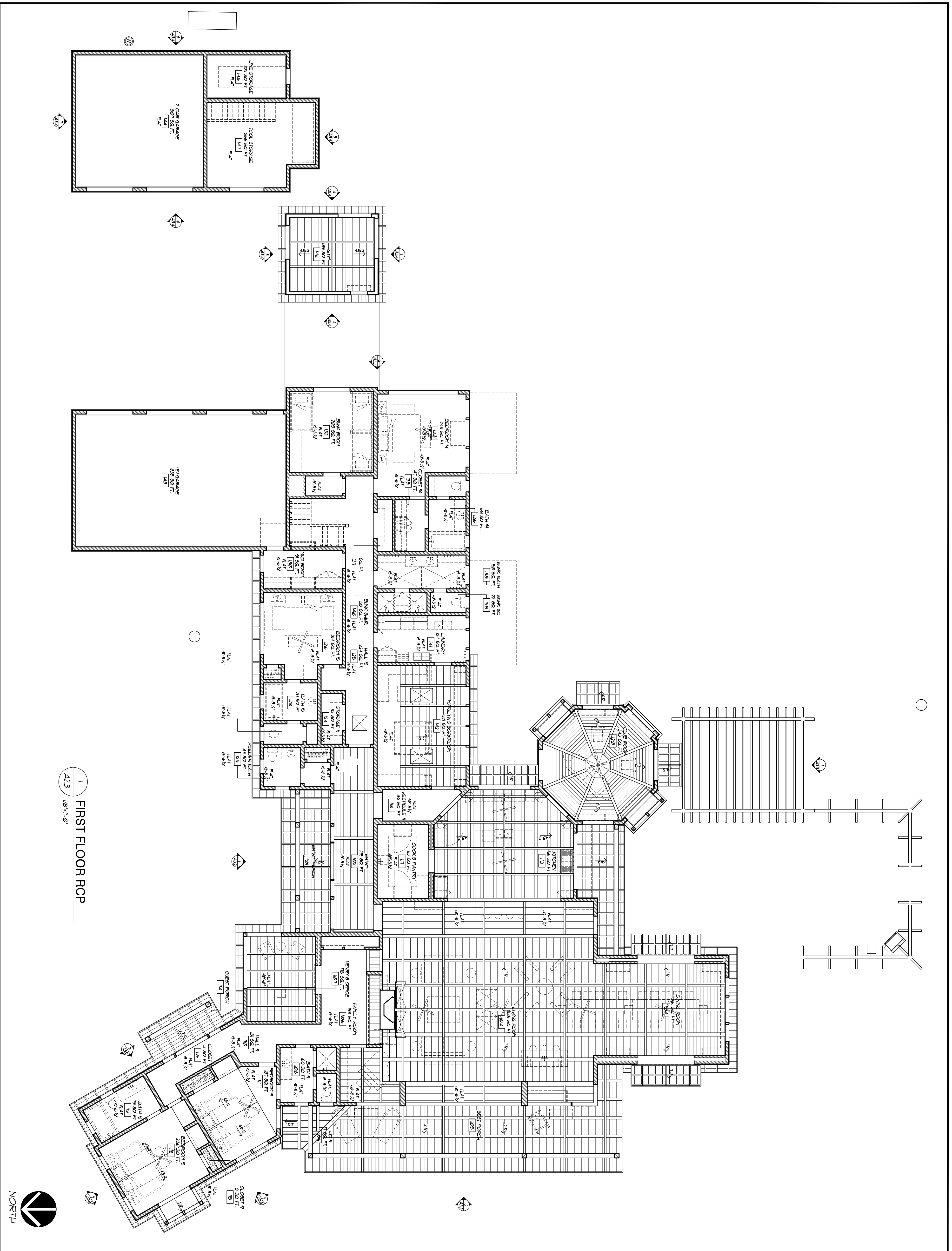
473 Cahill Lane, Santa Rosa, California 95401

**WADE DESIGN ARCHITECTS**

155 Frustuck Ave. Fairfax, CA 94930  
 Phone: 415.785.4213 Fax: 415.785.4214  
 info@wade-design.com

These documents are the property of Wade Design.  
 Any unauthorized use without written consent is prohibited by law.  
 Wade Design disclaims responsibility for the documents if used in whole or in part at any other location.

**A2.2**



1 FIRST FLOOR RCP  
A2.3 1/8"=1'-0"

GENERAL NOTES

These documents are the property of Wade Design. Any unauthorized use without written consent is prohibited by law. Wade Design disclaims responsibility for the documents if used in whole or in part at any other location.

SHEET NOTES

**WADE DESIGN ARCHITECTS**

155 Frustuck Ave. Fairfax, CA 94930  
Phone: 415.785.4213 Fax: 415.785.4214  
info@wade-design.com

**HANSEL RESIDENCE**

473 Cahill Lane, Santa Rosa, California 95401

KEY/LEGEND

- ⊙ A1 BULLET TYPE DOWNLIGHT
- ⊙ D1 SURFACE MOUNT, LOW VOLT, REMOTE TRANSFORMER
- ⊙ D2 PENDANT
- ⊙ D3 WALL SCONCE
- ⊙ D4 VENT FAN
- ⊙ D5 SWITCH
- ⊙ D6 3 WAY SWITCH
- ⊙ D7 CEILING SPEAKER
- ⊙ D8 RECESSED SPEAKER
- ⊙ D9 THERMOSTAT CONTROL'S
- ⊙ D10 SUPPLY AIR DIFFUSER
- ⊙ D11 RETURN AIR
- ⊙ D12 CEILING FAN

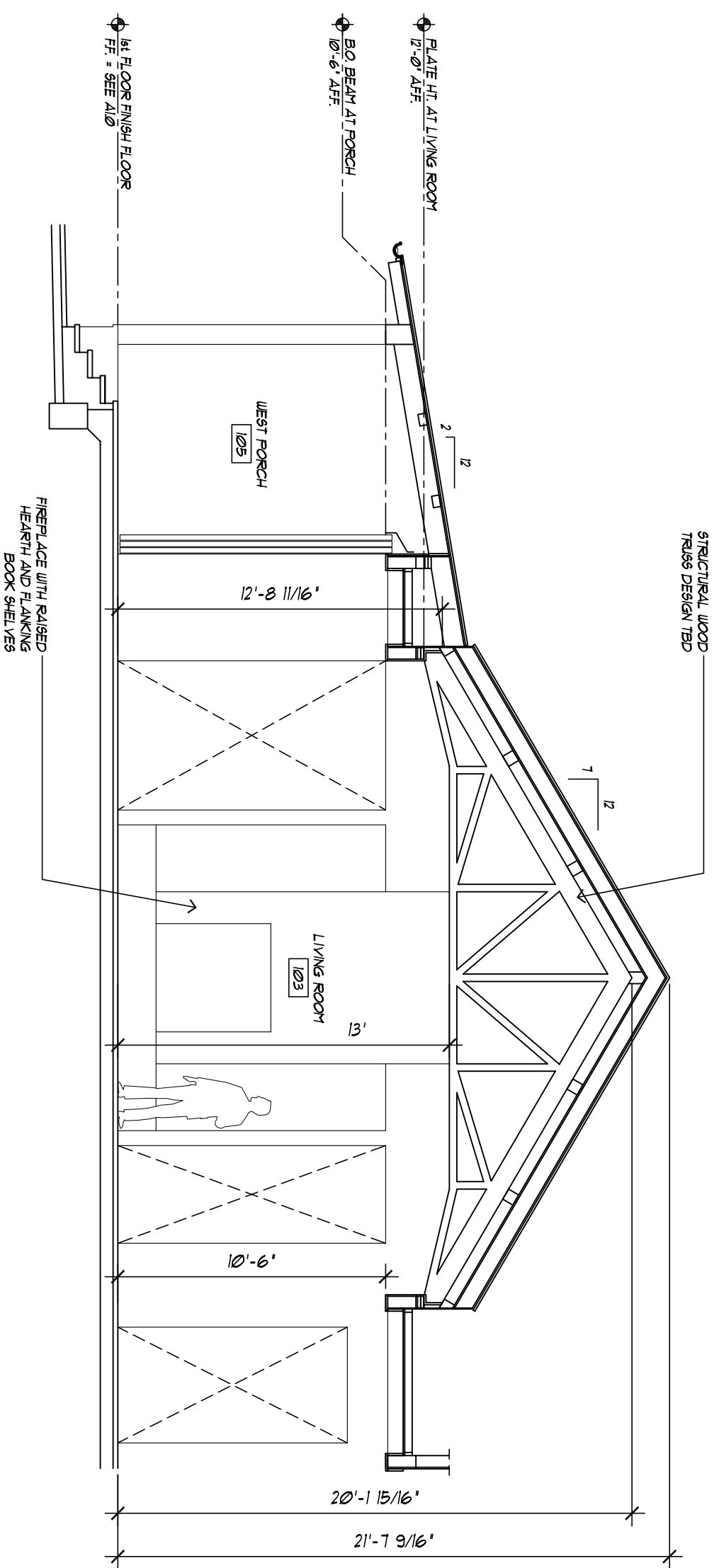
**NOT FOR CONSTRUCTION**

Drawn By: WD  
Checked By: WD  
Project No.: 09013  
Date: 03.01.10  
Issue: PRELIM PRICING SET

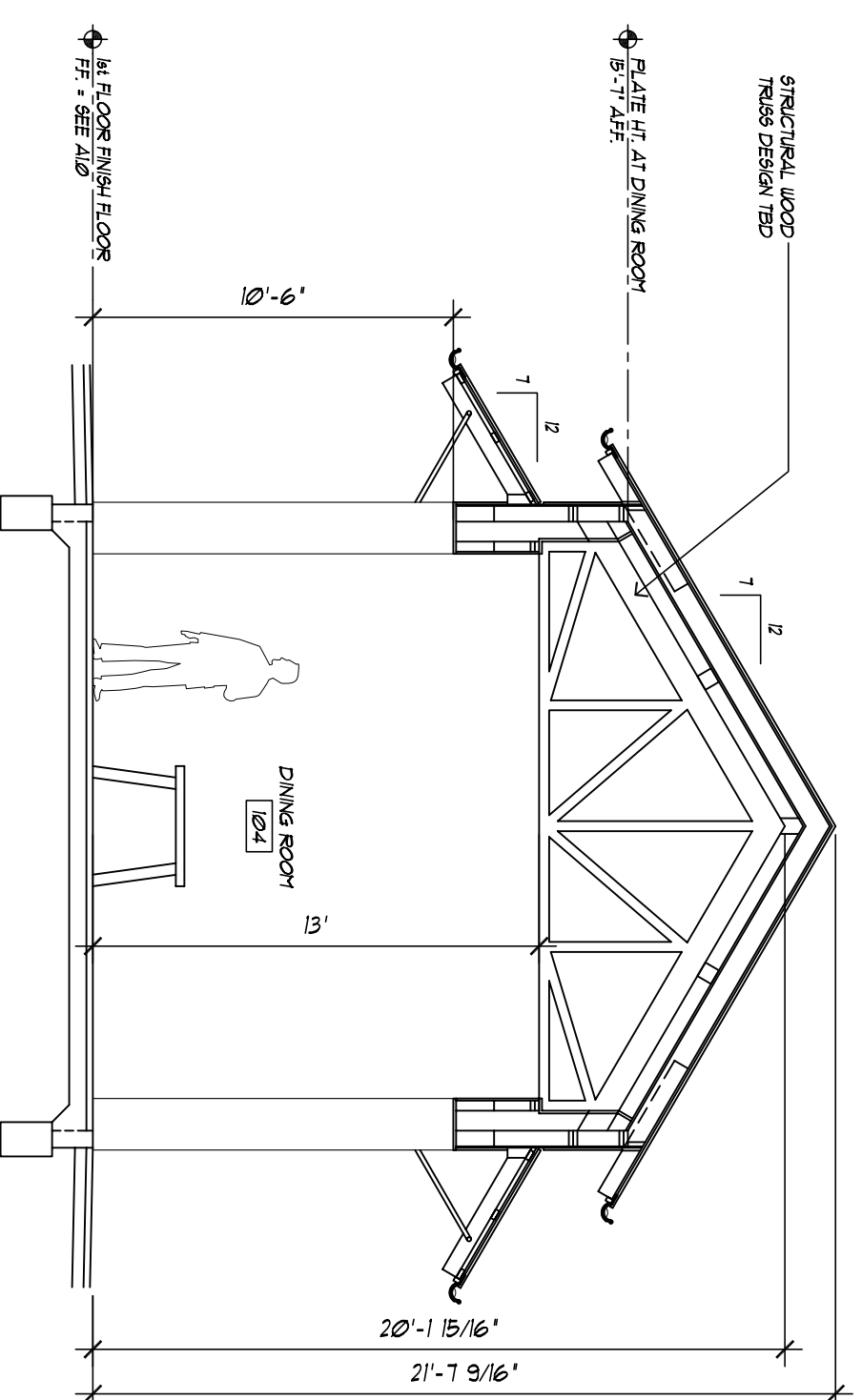
FIRST FLOOR RCP

SCALE : 1/8" = 1'-0"

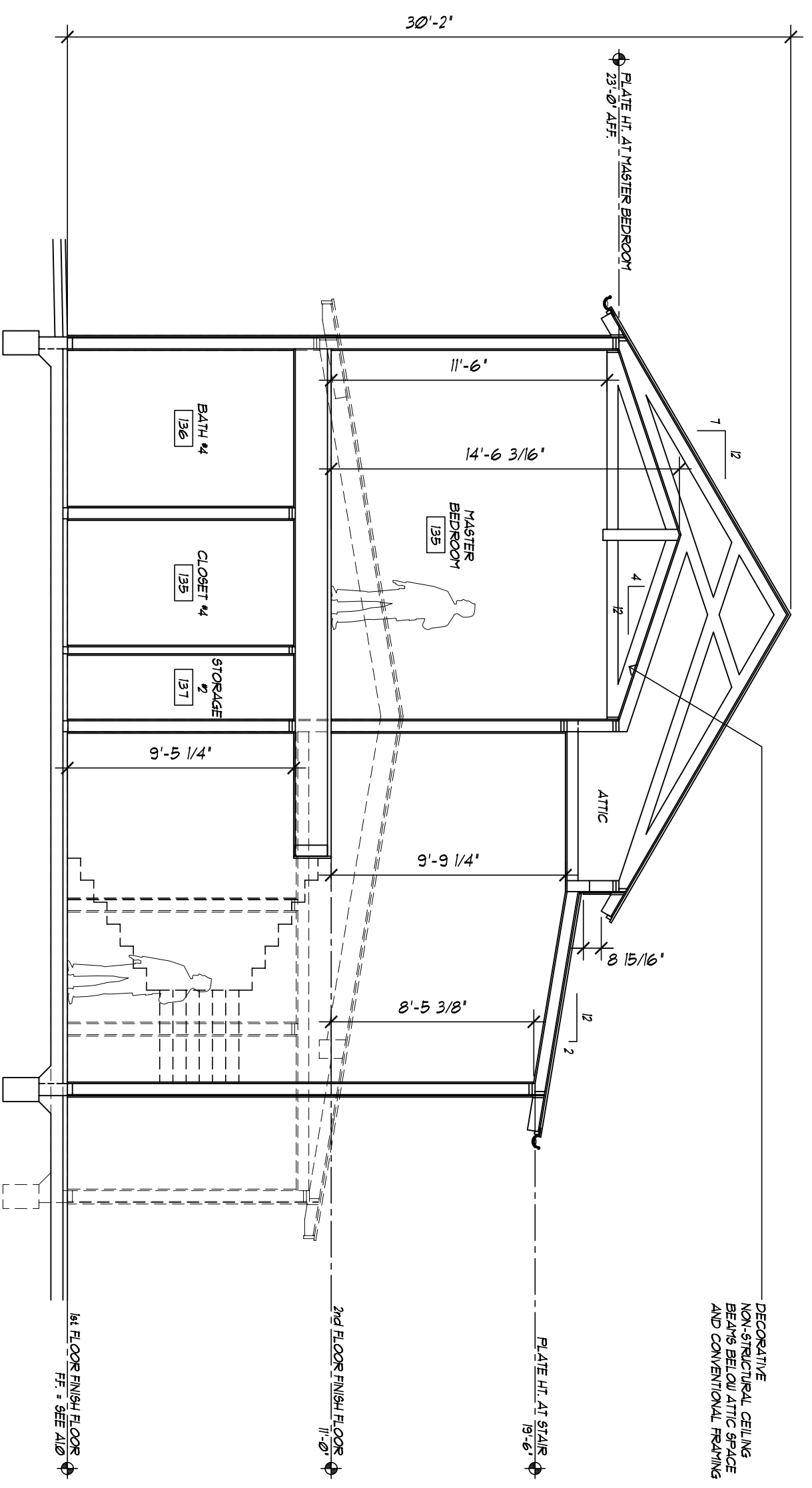
**A2.3**



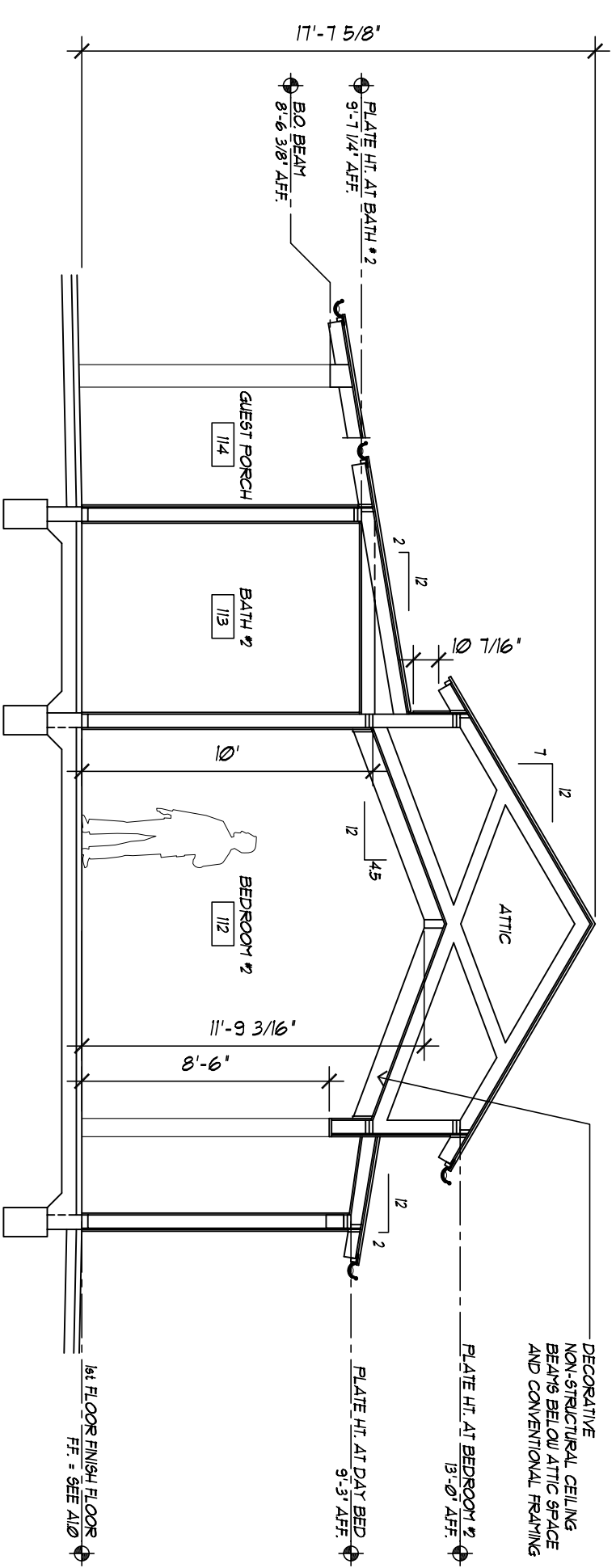
4 SECTION THRU LIVING ROOM  
A3.0 / 3/16"=1'-0"



2 SECTION THRU DINING ROOM  
A3.0 / 3/16"=1'-0"



3 SECTION THRU MASTER BEDROOM  
A3.0 / 3/16"=1'-0"



1 SECTION THRU BEDROOM #2  
A3.0 / 3/16"=1'-0"

DECORATIVE NON-STRUCTURAL CEILING BEAMS BELOW ATTIC SPACE AND CONVENTIONAL FRAMING

NOT FOR CONSTRUCTION

# HANSEL RESIDENCE

473 Cahill Lane, Santa Rosa, California 95401

## WADE DESIGN ARCHITECTS

155 Frustuck Ave. Fairfax, CA 94930  
Phone: 415.785.4213 Fax: 415.785.4214  
info@wade-design.com

These documents are the property of Wade Design. Any unauthorized use without written consent is prohibited by law. Wade Design disclaims responsibility for the documents if used in whole or in part at any other location.

Drawn By	WD
Checked By	WD
Project No.	09013
Date	03.01.10
Issue	PRELIM PRICING SET

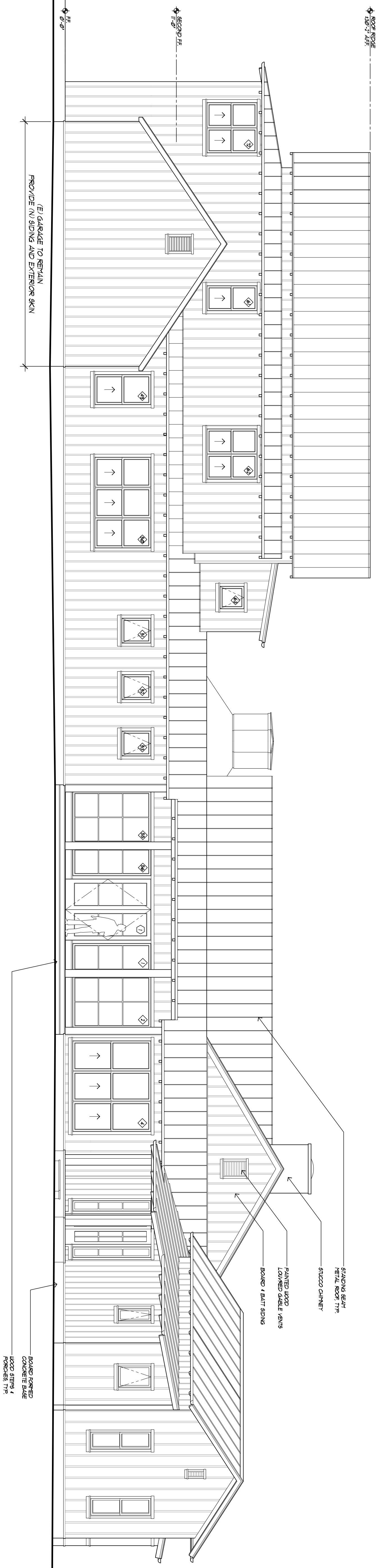
BUILDING SECTIONS  
SCALE : 3/16" = 1'-0"

# A3.0





2 ELEVATION FACING WEST  
3/16"=1'-0"



1 ELEVATION FACING NORTH  
3/16"=1'-0"

PROVIDE (N) SIDING AND EXTERIOR SKIN

These documents are the property of Wade Design. Any unauthorized use without written consent is prohibited by law. Wade Design disclaims responsibility for the documents if used in whole or in part at any other location.

**WADE DESIGN ARCHITECTS**  
155 Frustuck Ave. Fairfax, CA 94930  
Phone: 415.785.4213 Fax: 415.785.4214  
info@wade-design.com

**HANSEL RESIDENCE**  
473 Cahill Lane, Santa Rosa, California 95401

**NOT FOR CONSTRUCTION**

Drawn By: MD  
Checked By: JDB/LS  
Project No.: 09013  
Date: 03.01.10  
Issue: PRELIM PRICING SET

**BUILDING ELEVATIONS**

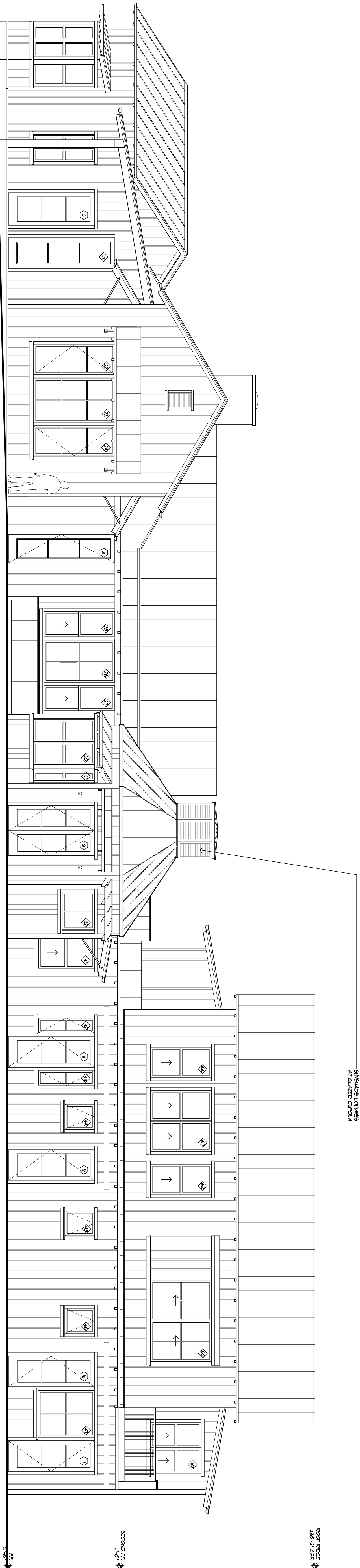
SCALE : 3/16"=1'-0"

**A3.2**



2  
3/16"=1'-0"

ELEVATION FACING EAST



1  
3/16"=1'-0"

ELEVATION FACING SOUTH

These documents are the property of Wade Design. Any unauthorized use without written consent is prohibited by law. Wade Design disclaims responsibility for the documents if used in whole or in part at any other location.

**WADE DESIGN ARCHITECTS**

155 Frustuck Ave. Fairfax, CA 94930  
Phone: 415.785.4213 Fax: 415.785.4214  
info@wade-design.com

**HANSEL RESIDENCE**

473 Cahill Lane, Santa Rosa, California 95401

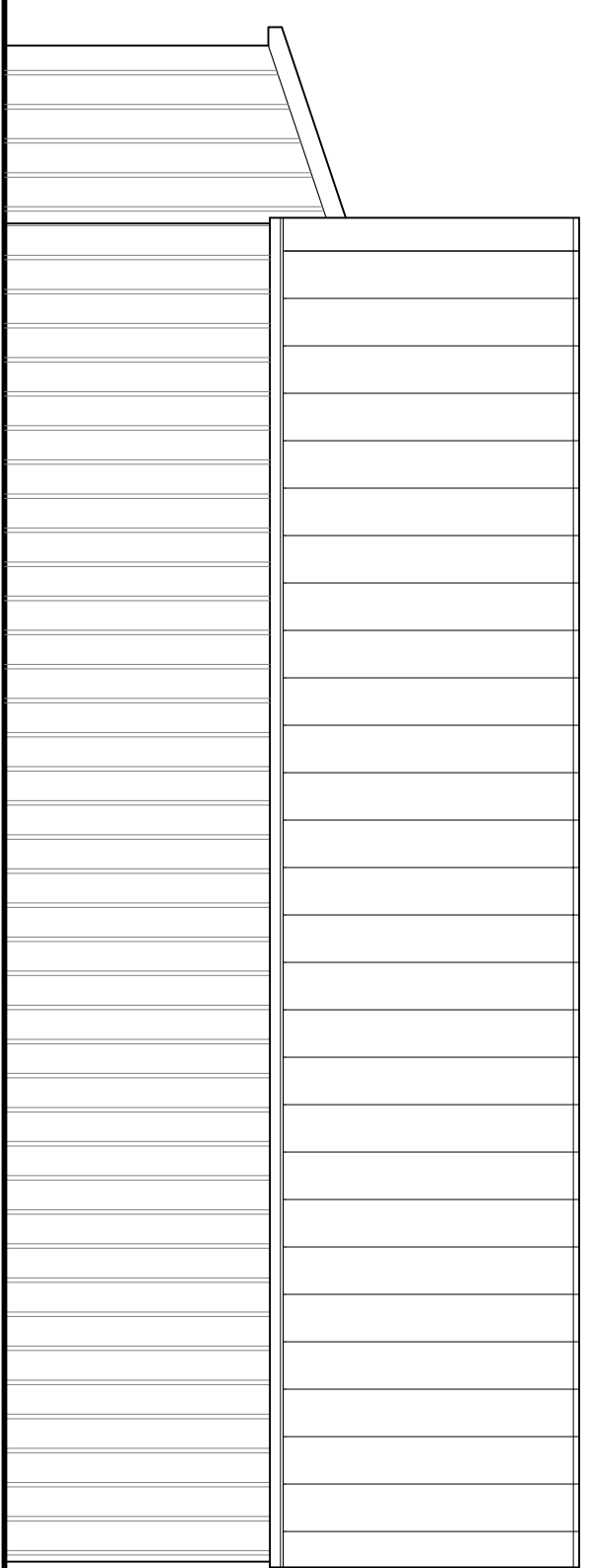
**NOT FOR CONSTRUCTION**

Drawn By: MD  
Checked By: MD  
Project No.: 09013  
Date: 03.01.10  
Issue: PRELIM PRICING SET

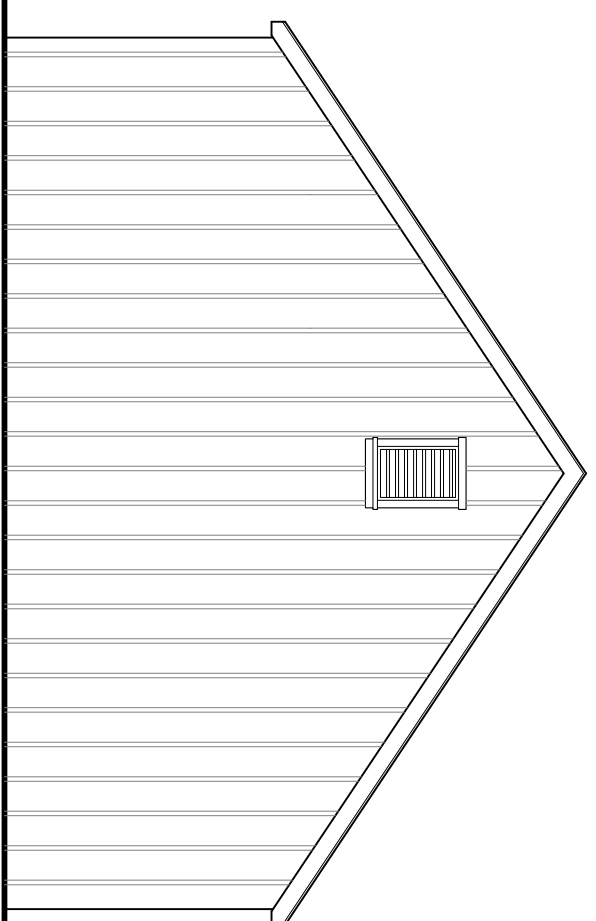
**BUILDING ELEVATIONS**

SCALE : 3/16"=1'-0"

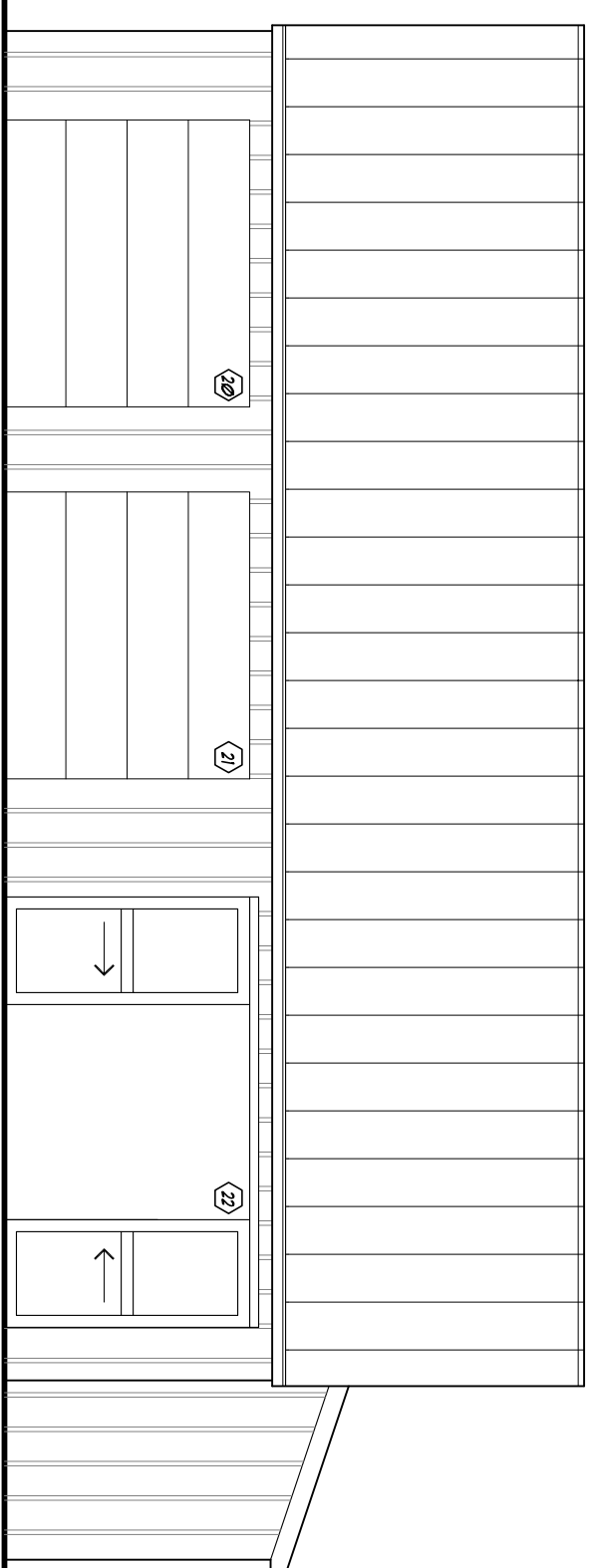
**A3.3**



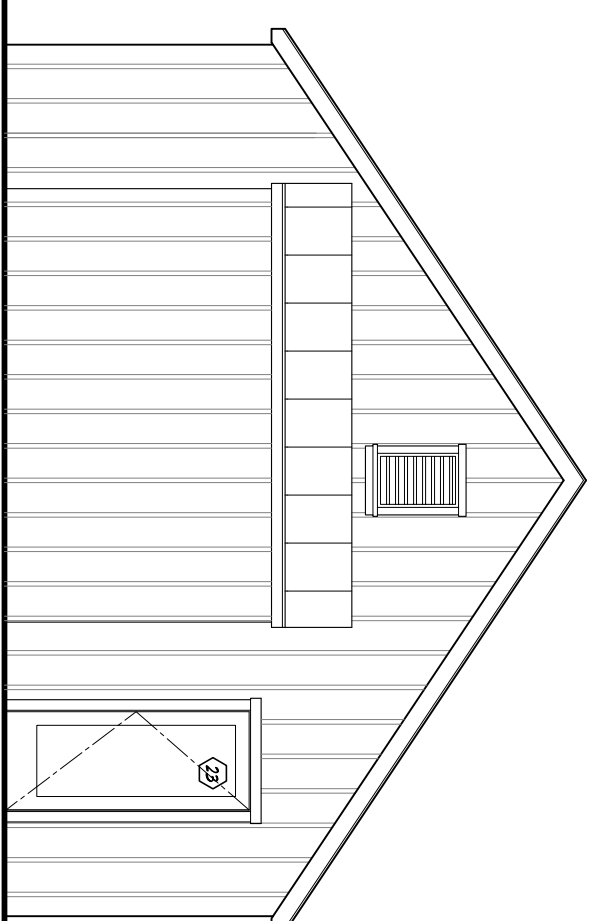
8 GARAGE ELEVATION FACING EAST  
3/4 3/16"=1'-0"



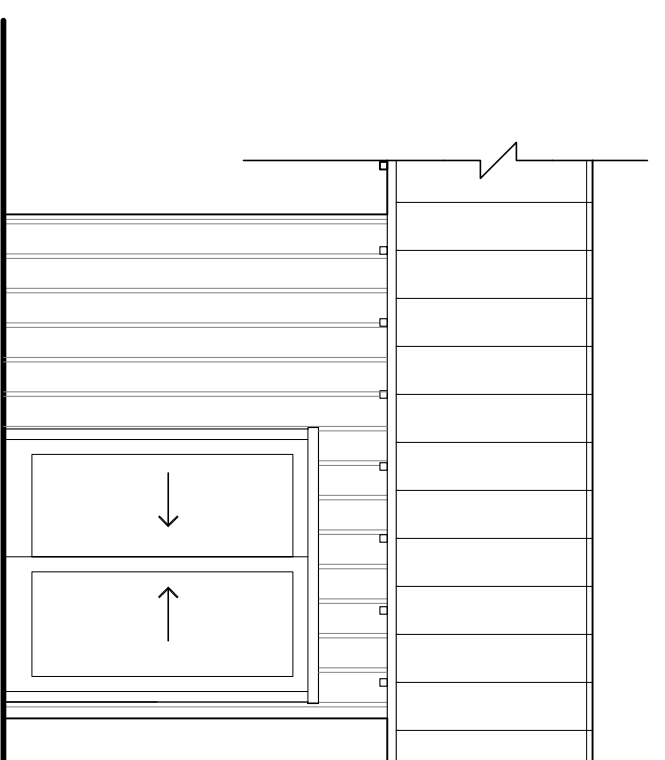
7 GARAGE ELEVATION FACING NORTH  
3/4 3/16"=1'-0"



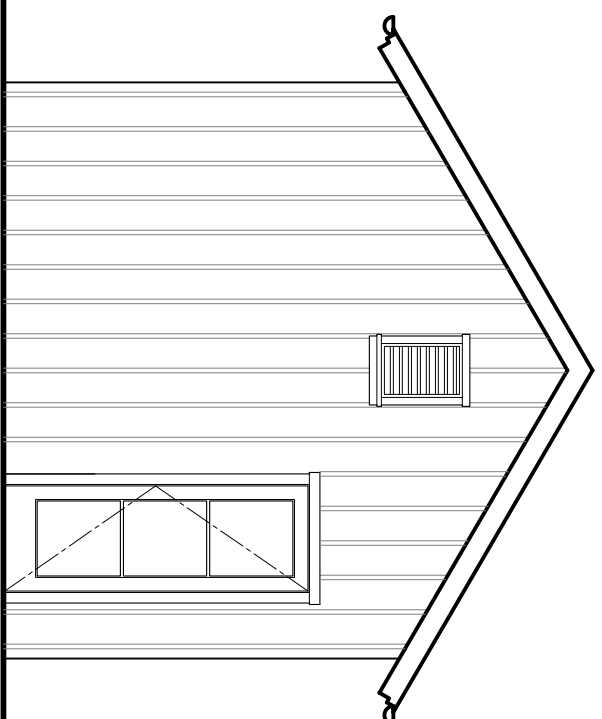
6 GARAGE ELEVATION FACING WEST  
3/4 3/16"=1'-0"



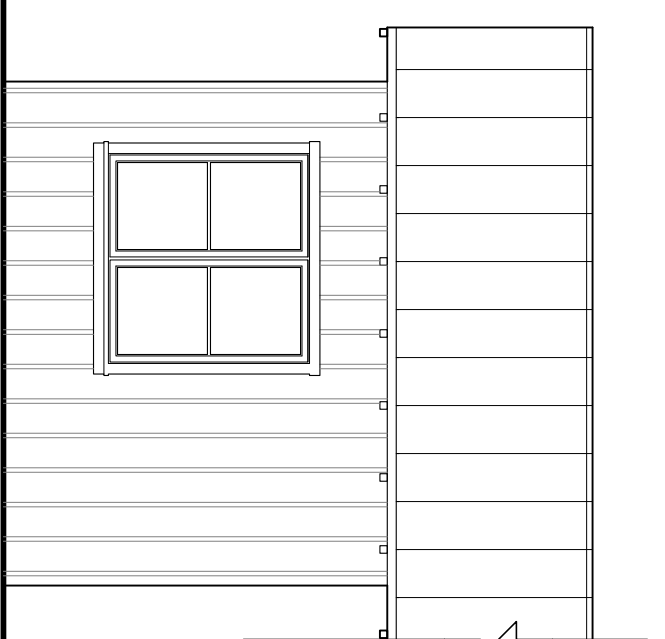
5 GARAGE ELEVATION FACING SOUTH  
3/4 3/16"=1'-0"



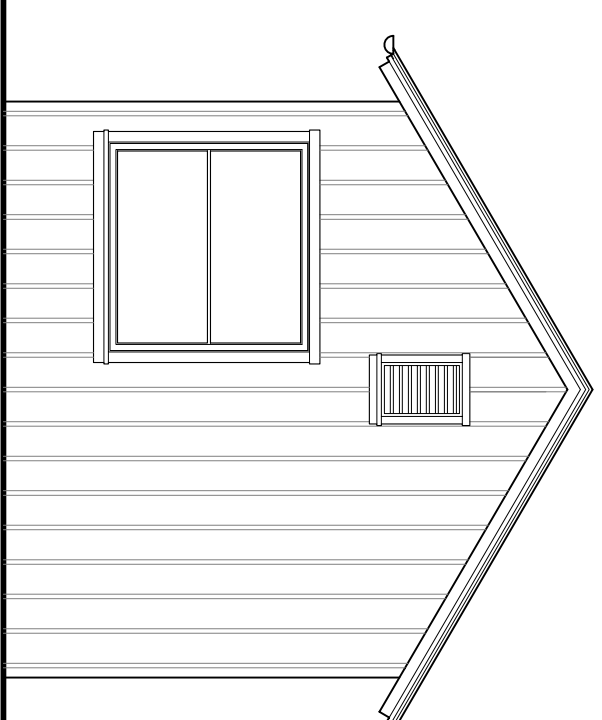
4 GYM ELEVATION FACING EAST  
3/4 3/16"=1'-0"



3 GYM ELEVATION FACING NORTH  
3/4 3/16"=1'-0"



2 GYM ELEVATION FACING WEST  
3/4 3/16"=1'-0"



1 GYM ELEVATION FACING SOUTH  
3/4 3/16"=1'-0"

These documents are the property of Wade Design.  
Any unauthorized use without written consent is prohibited by law.  
Wade Design disclaims responsibility for the documents if used in whole or in part at any other location.

**WADE DESIGN ARCHITECTS**  
155 Frustuck Ave. Fairfax, CA 94930  
Phone: 415.785.4213 Fax: 415.785.4214  
info@wade-design.com

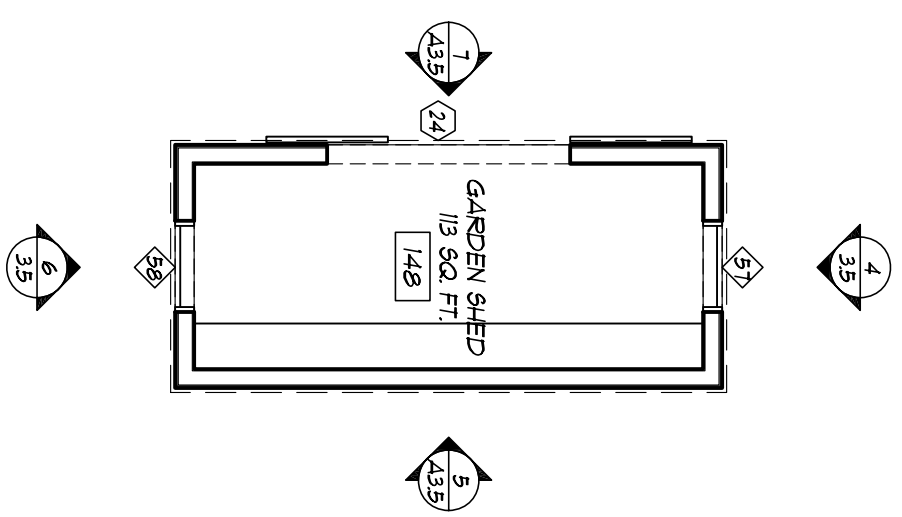
**HANSEL RESIDENCE**  
473 Cahill Lane, Santa Rosa, California 95401

*NOT FOR CONSTRUCTION*

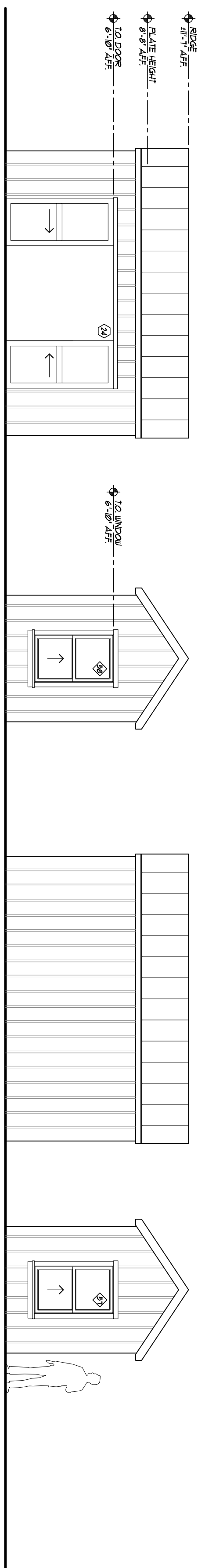
Drawn By: MD  
Checked By: MD  
Project No.: 09013  
Date: 03.01.10  
Issue: PRELIM PRICING SET

BUILDING ELEVATIONS  
SCALE : 3/16" = 1'-0"

**A3.4**



8 GARDEN SHED PLAN  
3.5 3/16"=1'-0"

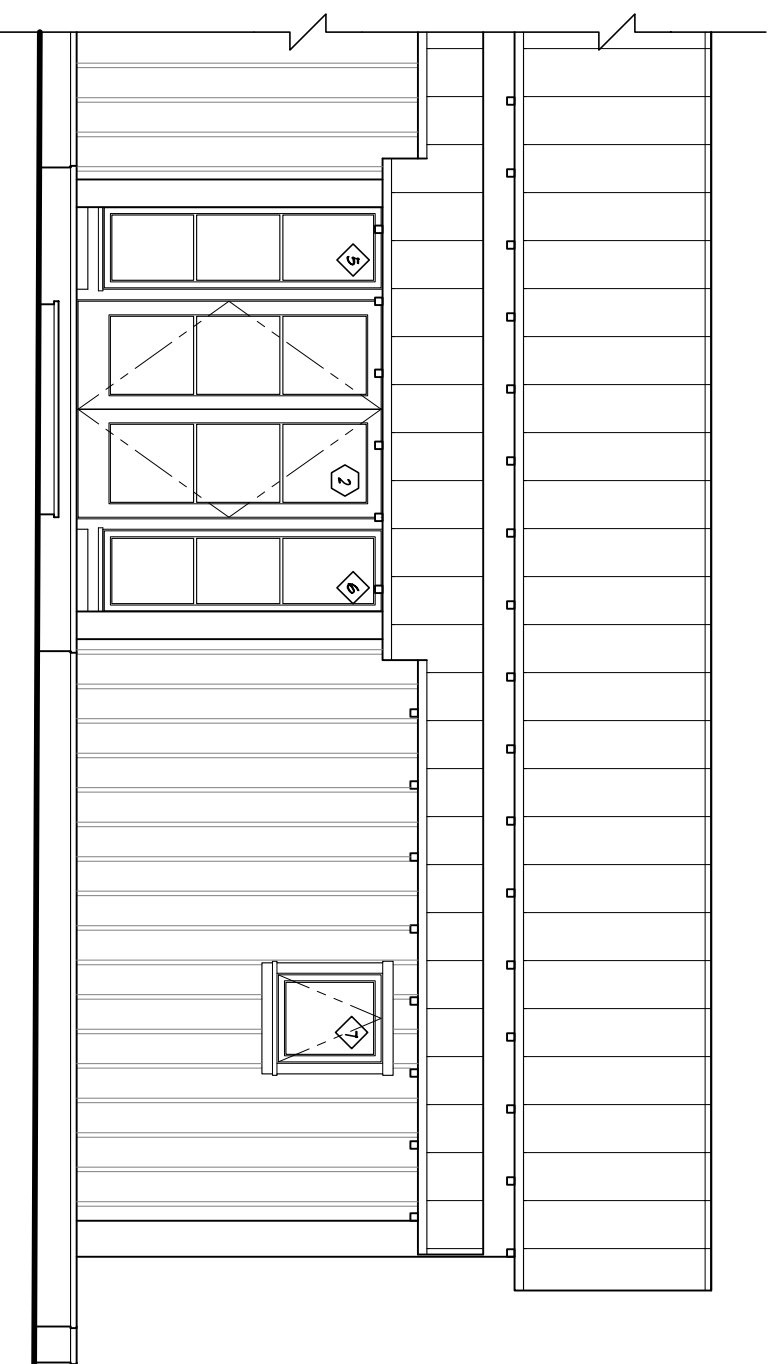


7 EAST SHED ELEVATION  
3.5 3/16"=1'-0"

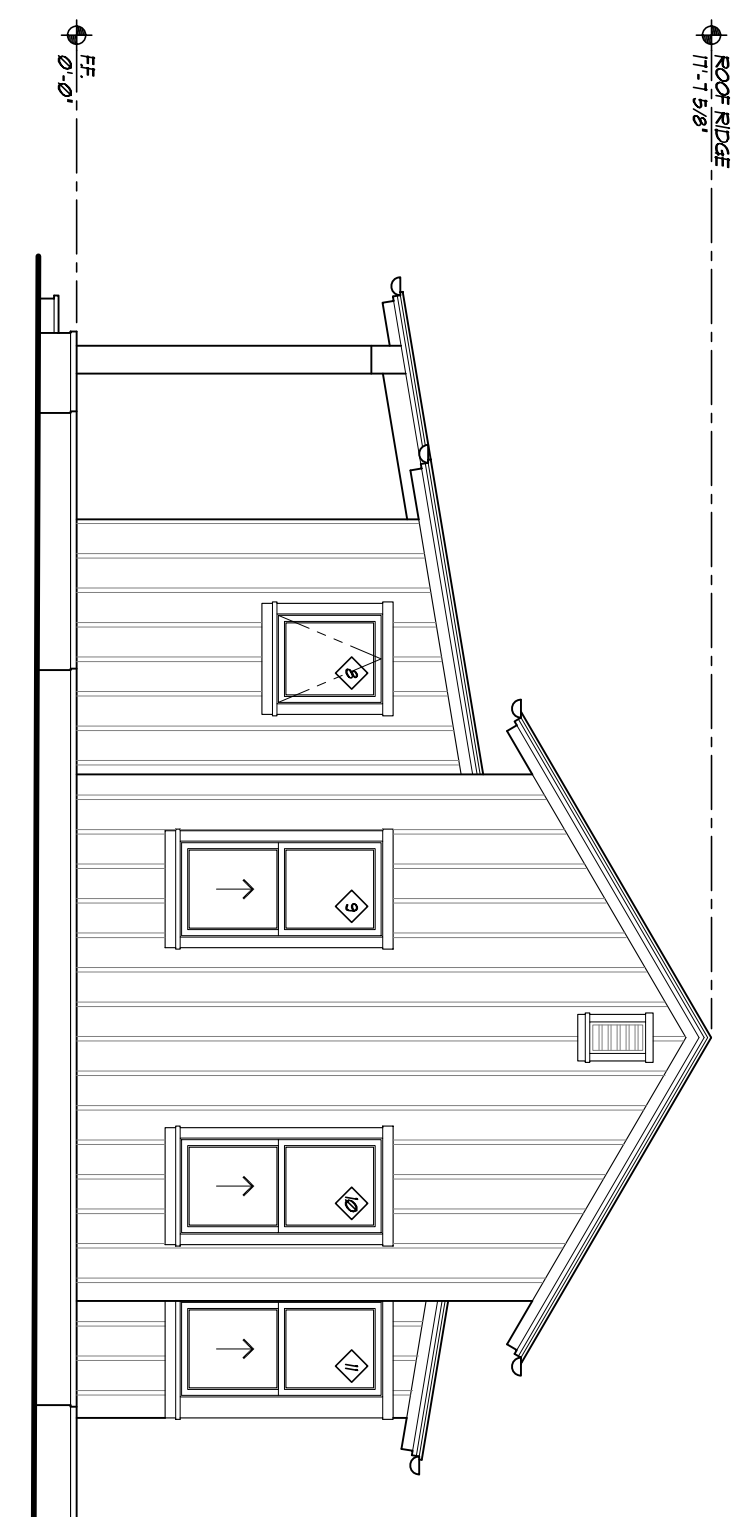
6 NORTH SHED ELEVATION  
3.5 3/16"=1'-0"

5 WEST SHED ELEVATION  
3.5 3/16"=1'-0"

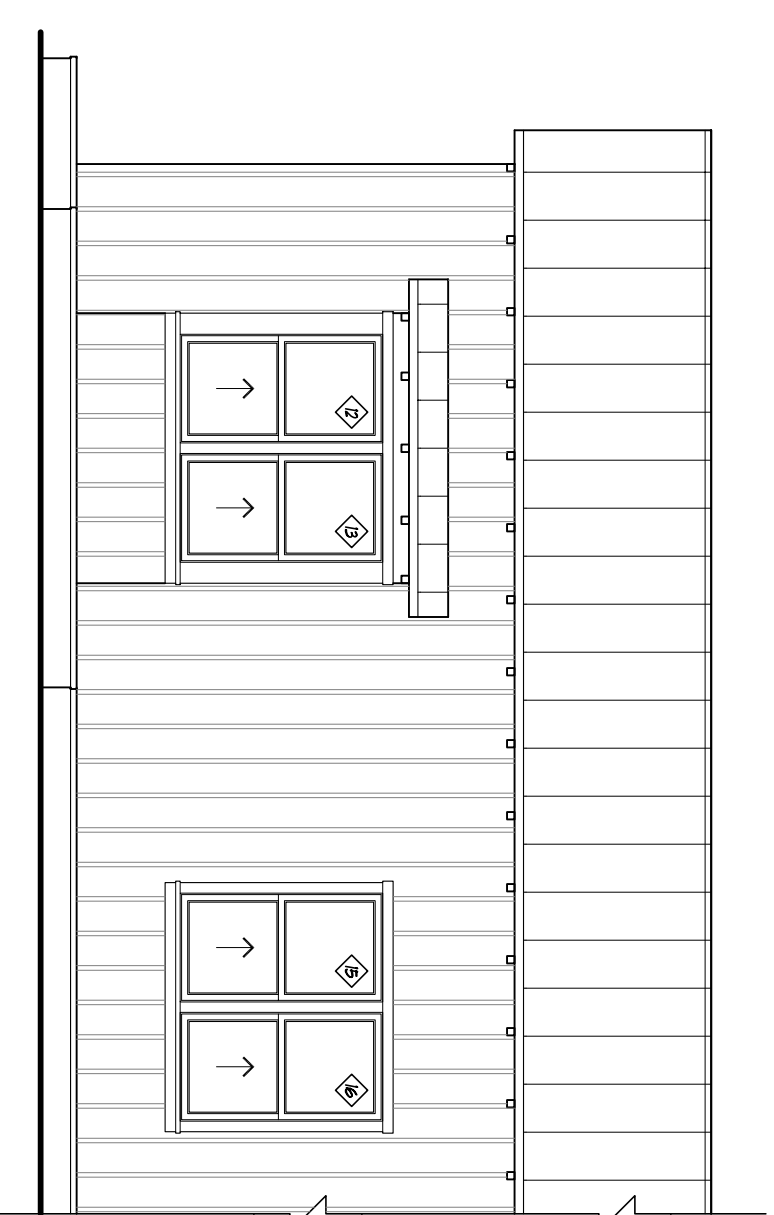
4 SOUTH SHED ELEVATION  
3.5 3/16"=1'-0"



3 BEDROOM #2 ELEVATION FACING SOUTHEAST  
3.5 3/16"=1'-0"



2 BEDROOM #2 ELEVATION FACING NORTHWEST  
3.5 3/16"=1'-0"



1 BEDROOM #2 ELEVATION FACING SOUTHWEST  
3.5 3/16"=1'-0"

NOT FOR CONSTRUCTION

# HANSEL RESIDENCE

473 Cahill Lane, Santa Rosa, California 95401

## WADE DESIGN ARCHITECTS

155 Frustuck Ave. Fairfax, CA 94930  
Phone: 415.785.4213 Fax: 415.785.4214  
info@wade-design.com

These documents are the property of Wade Design.

Any unauthorized use without written consent is prohibited by law.

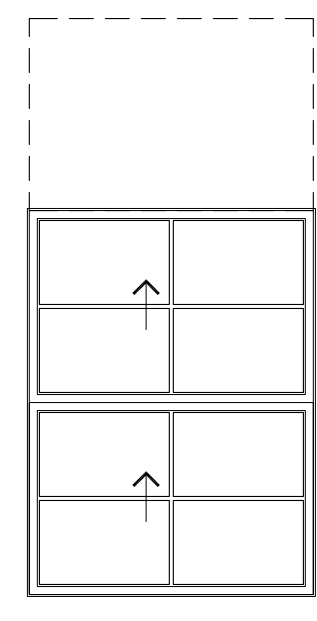
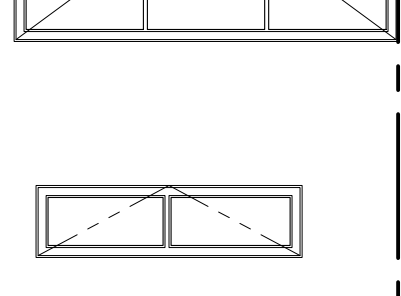
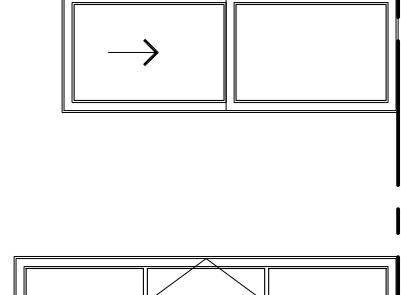
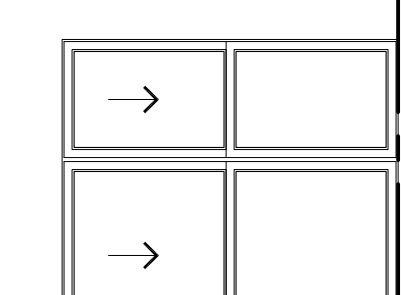
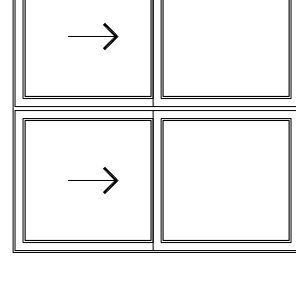
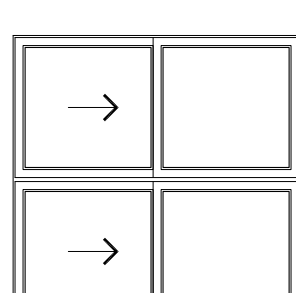
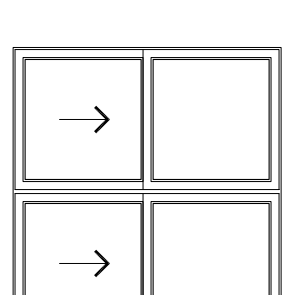
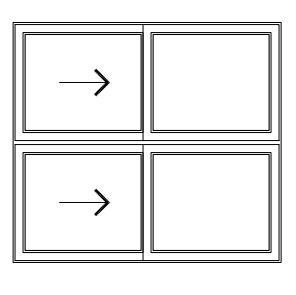
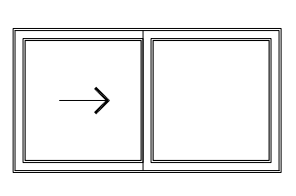
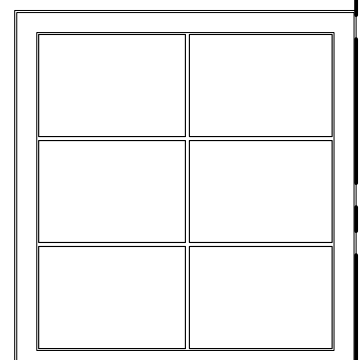
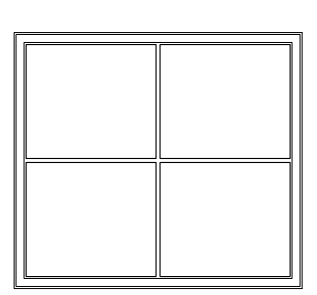
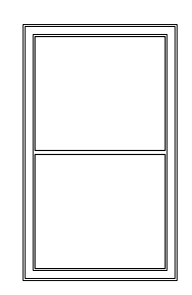
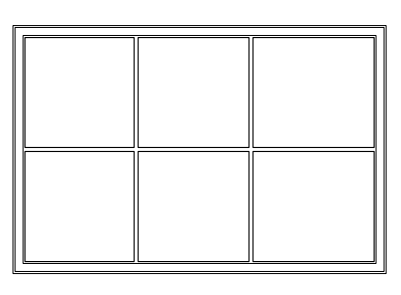
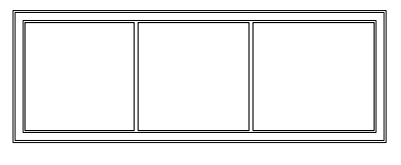
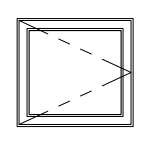
Wade Design disclaims responsibility for the documents if used in whole or in part at any other location.

### BUILDING ELEVATIONS

SCALE : 3/16"=1'-0"

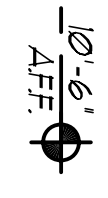
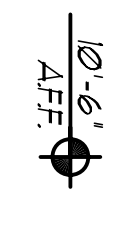
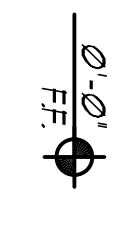
# A3.5





TYPE N

TYPE O



WINDOW AND SKYLIGHT SCHEDULE  
Hansel Residence

WINDOW NUMBER	LOCATION	WINDOW TYPE	QUANTITY	WIDTH	HEIGHT	SIZE HEIGHT	HEAD	FINISH	MATERIAL/FINISH	GLAZING	MANUFACTURER/STEPS	JAMB	OPERATION	NOTES
1	ENTRANCE	A	1	2'-0"	2'-0"	8'-0"	8'-0"	-	-	-	-	-	-	-
2	HENRIS CLOSET 102	C	1	5'-0"	8'-0"	8'-0"	8'-0"	-	-	-	-	-	-	-
3	HENRIS CLOSET 102	B	1	3'-0"	8'-0"	7'-0"	8'-0"	-	-	-	-	-	-	-
4	HENRIS CLOSET 102	B	1	3'-0"	8'-0"	7'-0"	8'-0"	-	-	-	-	-	-	-
5	HALL LAM 110	B	1	2'-4"	8'-0"	8'-0"	8'-0"	-	-	-	-	-	-	-
6	HALL LAM 110	B	1	2'-4"	8'-0"	8'-0"	8'-0"	-	-	-	-	-	-	-
7	BATH #201 113	A	1	2'-4"	2'-0"	2'-0"	8'-0"	-	-	-	-	-	-	-
8	BATH #201 113	A	1	2'-4"	2'-0"	2'-0"	8'-0"	-	-	-	-	-	-	-
9	BEDROOM #201 112	G	1	2'-6"	5'-0"	8'-0"	8'-0"	-	-	-	-	-	-	-
10	BEDROOM #201 112	G	1	2'-6"	5'-0"	8'-0"	8'-0"	-	-	-	-	-	-	-
11	BEDROOM #201 112	G	1	2'-6"	5'-0"	8'-0"	8'-0"	-	-	-	-	-	-	-
12	BEDROOM #201 112	G	1	2'-6"	5'-0"	8'-0"	8'-0"	-	-	-	-	-	-	-
13	BEDROOM #201 112	G	1	2'-6"	5'-0"	8'-0"	8'-0"	-	-	-	-	-	-	-
14	BEDROOM #201 112	G	1	2'-6"	5'-0"	8'-0"	8'-0"	-	-	-	-	-	-	-
15	BEDROOM #201 112	G	1	2'-6"	5'-0"	8'-0"	8'-0"	-	-	-	-	-	-	-
16	BEDROOM #201 111	G	1	3'-0"	5'-0"	8'-0"	8'-0"	-	-	-	-	-	-	-
17	BATH #201 111	A	1	2'-4"	2'-0"	2'-0"	8'-0"	-	-	-	-	-	-	-
18	WAS #201 108	A	1	2'-4"	2'-0"	2'-0"	8'-0"	-	-	-	-	-	-	-
19	WAS #201 108	F	1	2'-0"	7'-0"	7'-0"	10'-0"	-	-	-	-	-	-	-
20	LIVING ROOM 103	G	1	3'-0"	10'-0"	10'-0"	10'-0"	-	-	-	-	-	-	-
21	LIVING ROOM 103	G	1	3'-0"	10'-0"	10'-0"	10'-0"	-	-	-	-	-	-	-
22	DINING ROOM 104	C	1	4'-4"	8'-0"	8'-0"	10'-0"	-	-	-	-	-	-	-
23	DINING ROOM 104	C	1	4'-4"	8'-0"	8'-0"	10'-0"	-	-	-	-	-	-	-
24	DINING ROOM 104	L	1	3'-4"	8'-0"	8'-0"	10'-0"	-	-	-	-	-	-	-
25	KITCHEN 119	G	1	2'-4"	7'-0"	7'-0"	10'-0"	-	-	-	-	-	-	-
26	KITCHEN 119	E	1	4'-0"	7'-0"	7'-0"	10'-0"	-	-	-	-	-	-	-
27	KITCHEN 119	G	1	2'-4"	7'-0"	7'-0"	10'-0"	-	-	-	-	-	-	-
28	CLOSET ROOM 120	G	1	3'-0"	8'-0"	8'-0"	8'-0"	-	-	-	-	-	-	-
29	CLOSET ROOM 120	G	1	3'-0"	8'-0"	8'-0"	8'-0"	-	-	-	-	-	-	-
30	CLOSET ROOM 120	H	2	8'-4 1/2"	6'-0"	8'-0"	8'-0"	-	-	-	-	-	-	-
31	CLOSET ROOM 120	G	1	1'-6"	6'-0"	8'-0"	8'-0"	-	-	-	-	-	-	-
32	CLOSET ROOM 120	G	1	1'-6"	6'-0"	8'-0"	8'-0"	-	-	-	-	-	-	-
33	CLOSET ROOM 120	E	1	5'-4"	6'-0"	8'-0"	8'-0"	-	-	-	-	-	-	-
34	CLOSET ROOM 120	G	1	1'-4"	6'-0"	8'-0"	8'-0"	-	-	-	-	-	-	-
35	CLOSET ROOM 120	H	2	8'-4 1/2"	6'-0"	8'-0"	8'-0"	-	-	-	-	-	-	-
36	CLOSET ROOM 120	G	1	1'-6"	6'-0"	8'-0"	8'-0"	-	-	-	-	-	-	-
37	CLOSET ROOM 120	G	1	1'-6"	6'-0"	8'-0"	8'-0"	-	-	-	-	-	-	-
38	WALKING WORKROOM 142	G	1	3'-0 1/2"	5'-0"	8'-0"	8'-0"	-	-	-	-	-	-	-
39	WALKING WORKROOM 142	G	1	3'-0 1/2"	5'-0"	8'-0"	8'-0"	-	-	-	-	-	-	-
40	WALKING WORKROOM 142	G	1	3'-0 1/2"	5'-0"	8'-0"	8'-0"	-	-	-	-	-	-	-
41	WALKING WORKROOM 142	G	1	3'-0 1/2"	5'-0"	8'-0"	8'-0"	-	-	-	-	-	-	-
42	LANOVY 141	M	1	1'-1 1/2"	5'-0"	8'-0"	8'-0"	-	-	-	-	-	-	-
43	LANOVY 141	M	1	1'-1 1/2"	5'-0"	8'-0"	8'-0"	-	-	-	-	-	-	-
44	BRK W/CL 126	A	1	2'-0"	2'-0"	8'-0"	8'-0"	-	-	-	-	-	-	-
45	BRK W/CL 126	A	1	2'-0"	2'-0"	8'-0"	8'-0"	-	-	-	-	-	-	-
46	BRK W/CL 126	A	1	2'-0"	2'-0"	8'-0"	8'-0"	-	-	-	-	-	-	-
47	BRK W/CL 126	E	1	4'-8"	5'-0"	8'-0"	8'-0"	-	-	-	-	-	-	-
48	BRK W/CL 126	J	4	12'-0"	6'-0"	8'-0"	8'-0"	-	-	-	-	-	-	-
49	MAJ ROOM 130	G	1	3'-0"	5'-0"	8'-0"	8'-0"	-	-	-	-	-	-	-
50	BRK W/CL 130	1	3	9'-0"	5'-0"	8'-0"	8'-0"	-	-	-	-	-	-	-
51	BATH #201 128	A	1	2'-4"	2'-0"	2'-0"	8'-0"	-	-	-	-	-	-	-
52	W/CL 201 129	A	1	2'-4"	2'-0"	2'-0"	8'-0"	-	-	-	-	-	-	-
53	POWER BATH 121	A	1	2'-4"	2'-0"	2'-0"	8'-0"	-	-	-	-	-	-	-
54	POWER BATH 121	A	1	2'-4"	2'-0"	2'-0"	8'-0"	-	-	-	-	-	-	-
55	POWER BATH 121	C	1	5'-0"	8'-0"	8'-0"	8'-0"	-	-	-	-	-	-	-
56	ENTRANCE 102	B	1	2'-0"	8'-0"	8'-0"	8'-0"	-	-	-	-	-	-	-
57	ENTRANCE 102	B	1	2'-0"	8'-0"	8'-0"	8'-0"	-	-	-	-	-	-	-
58	ENTRANCE 102	B	1	2'-0"	8'-0"	8'-0"	8'-0"	-	-	-	-	-	-	-
59	ENTRANCE 102	B	1	2'-0"	8'-0"	8'-0"	8'-0"	-	-	-	-	-	-	-
60	ENTRANCE 102	B	1	2'-0"	8'-0"	8'-0"	8'-0"	-	-	-	-	-	-	-
61	STAIRS 301	G	1	2'-0"	5'-0"	8'-0"	8'-0"	-	-	-	-	-	-	-
62	WALKING CLOSET 204	H	2	5'-0"	5'-0"	8'-0"	8'-0"	-	-	-	-	-	-	-
63	WALKING CLOSET 204	H	2	5'-0"	5'-0"	8'-0"	8'-0"	-	-	-	-	-	-	-
64	MASTER BATH 204	A	1	2'-4"	2'-0"	2'-0"	8'-0"	-	-	-	-	-	-	-
65	MASTER BATH 204	G	1	3'-0"	6'-0"	8'-0"	8'-0"	-	-	-	-	-	-	-
66	MASTER BATH 204	G	1	2'-0"	6'-0"	8'-0"	8'-0"	-	-	-	-	-	-	-
67	MASTER BATH 204	H	2	2'-0"	6'-0"	8'-0"	8'-0"	-	-	-	-	-	-	-
68	MASTER BATH 204	H	2	2'-0"	6'-0"	8'-0"	8'-0"	-	-	-	-	-	-	-
69	MASTER BATH 204	M	2	8'-0"	6'-0"	8'-0"	8'-0"	-	-	-	-	-	-	-
70	STUDY 204	H	2	5'-0"	5'-0"	8'-0"	8'-0"	-	-	-	-	-	-	-
71	STUDY 204	J	4	10'-0"	5'-0"	8'-0"	8'-0"	-	-	-	-	-	-	-
72	STUDY 204	H	4	5'-0"	5'-0"	8'-0"	8'-0"	-	-	-	-	-	-	-
73	STUDY 204	H	4	5'-0"	5'-0"	8'-0"	8'-0"	-	-	-	-	-	-	-
74	STUDY 204	H	4	5'-0"	5'-0"	8'-0"	8'-0"	-	-	-	-	-	-	-
75	STUDY 204	H	4	5'-0"	5'-0"	8'-0"	8'-0"	-	-	-	-	-	-	-
76	STUDY 204	H	4	5'-0"	5'-0"	8'-0"	8'-0"	-	-	-	-	-	-	-
77	STUDY 204	H	4	5'-0"	5'-0"	8'-0"	8'-0"	-	-	-	-	-	-	-
78	STUDY 204	H	4	5'-0"	5'-0"	8'-0"	8'-0"	-	-	-	-	-	-	-
79	STUDY 204	H	4	5'-0"	5'-0"	8'-0"	8'-0"	-	-	-	-	-	-	-
80	STUDY 204	H	4	5'-0"	5'-0"	8'-0"	8'-0"	-	-	-	-	-	-	-
81	STUDY 204	H	4	5'-0"	5'-0"	8'-0"	8'-0"	-	-	-	-	-	-	-
82	STUDY 204	H	4	5'-0"	5'-0"	8'-0"	8'-0"	-	-	-	-	-	-	-
83	STUDY 204	H	4	5'-0"	5'-0"	8'-0"	8'-0"	-	-	-	-	-	-	-
84	STUDY 204	H	4	5'-0"	5'-0"	8'-0"	8'-0"	-	-	-	-	-	-	-
85	STUDY 204	H	4	5'-0"	5'-0"	8'-0"	8'-0"	-	-	-	-	-	-	-
86	STUDY 204	H	4	5'-0"	5'-0"	8'-0"	8'-0"	-	-	-	-	-	-	-
87	STUDY 204	H	4	5'-0"	5'-0"	8'-0"	8'-0"	-	-	-	-	-	-	-
88	STUDY 204	H	4	5'-0"	5'-0"	8'-0"	8'-0"	-	-	-	-	-	-	-
89	STUDY 204	H	4	5'-0"	5'-0"	8'-0"	8'-0"	-	-	-	-	-	-	-
90	STUDY 204	H	4	5'-0"	5'-0"	8'-0"	8'-0"	-	-	-	-	-	-	-
91	STUDY 204	H	4	5'-0"	5'-0"	8'-0"	8'-0"	-	-	-	-	-	-	-
92	STUDY 204	H	4	5'-0"	5'-0"	8'-0"	8'-0"	-	-	-	-	-	-	-
93	STUDY 204	H	4	5'-0"	5'-0"	8'-0"	8'-0"	-	-	-	-	-	-	-
94	STUDY 204	H	4	5'-0"	5'-0"	8'-0"	8'-0"	-	-	-	-	-	-	-
95	STUDY 204	H	4	5'-0"	5'-0"	8'-0"	8'-0"	-	-	-	-	-	-	-
96	STUDY 204	H	4	5'-0"	5'-0"	8'-0"	8'-0"	-	-	-	-	-	-	-
97	STUDY 204	H	4	5'-0"	5'-0"	8'-0"	8'-0"	-	-	-	-	-	-	-
98	STUDY 204	H	4	5'-0"	5'-0"	8'-0"	8'-0"	-	-	-	-	-	-	-
99	STUDY 204	H	4	5'-0"	5'-0"	8'-0"	8'-0"	-	-	-	-	-	-	-
100	STUDY 204	H	4	5'-0"	5'-0"	8'-0"	8'-0"	-	-	-	-	-	-	-

MAIN HOUSE

DATE: 03.01.10

ISSUE: PRELIM PRICING SET

SCALE: 1/4" = 1'-0"

WINDOW SCHEDULE

PROJECT NO. 09013

CHECKED BY: MD

DRAWN BY: MD

DATE: 03.01.10

ISSUE: PRELIM PRICING SET

SCALE: 1/4" = 1'-0"

WINDOW SCHEDULE

PROJECT NO. 09013

CHECKED BY: MD

DRAWN BY: MD

DATE: 03.01.10

ISSUE